

# Ask about the other sites in the Blackstone River Valley NHP

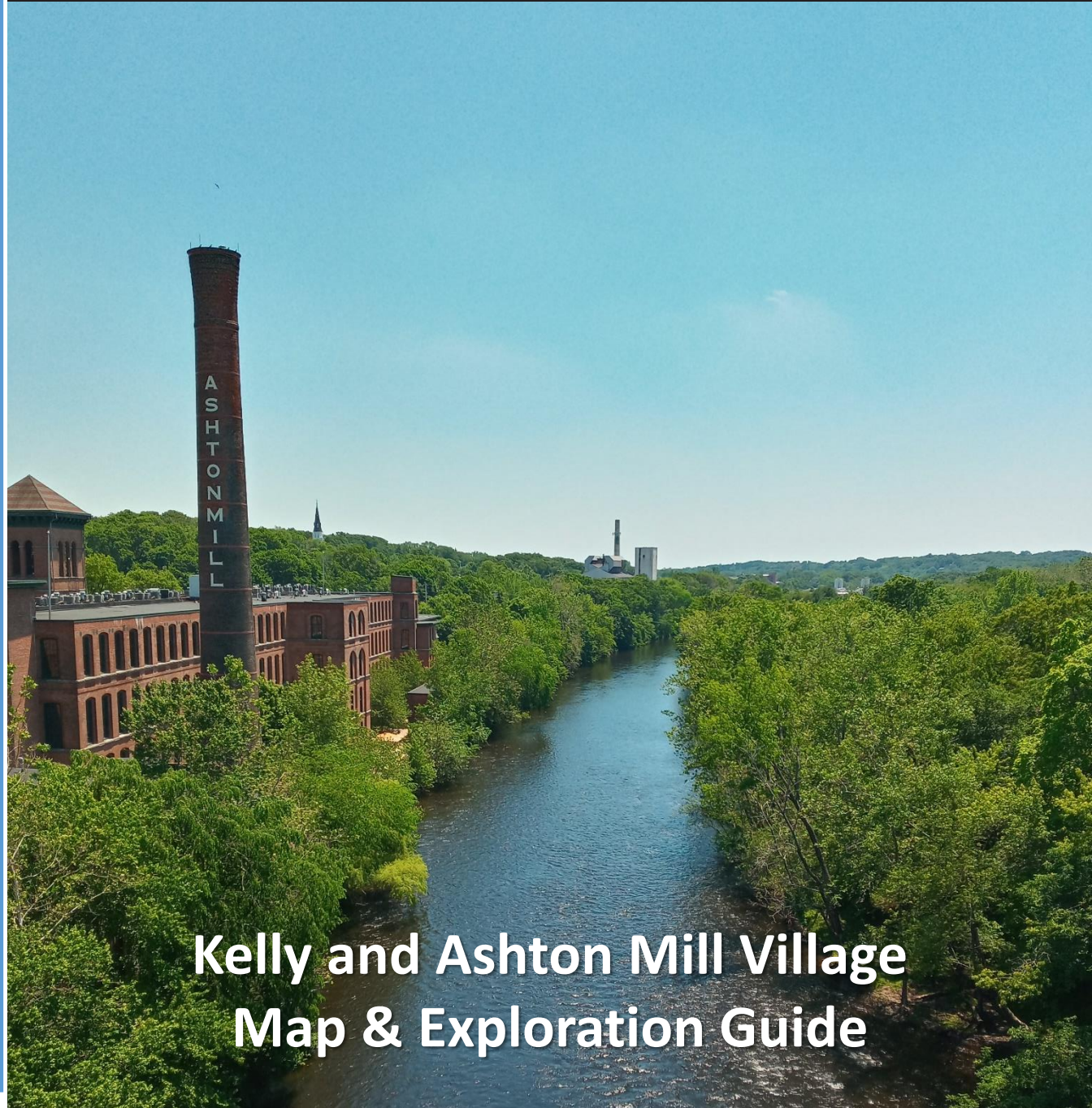
# Blackstone River Valley National Historical Park

U.S. Department of the Interior  
National Park Service



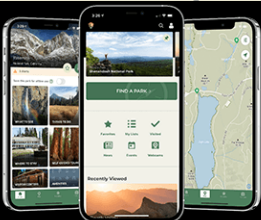
Also visit us at:

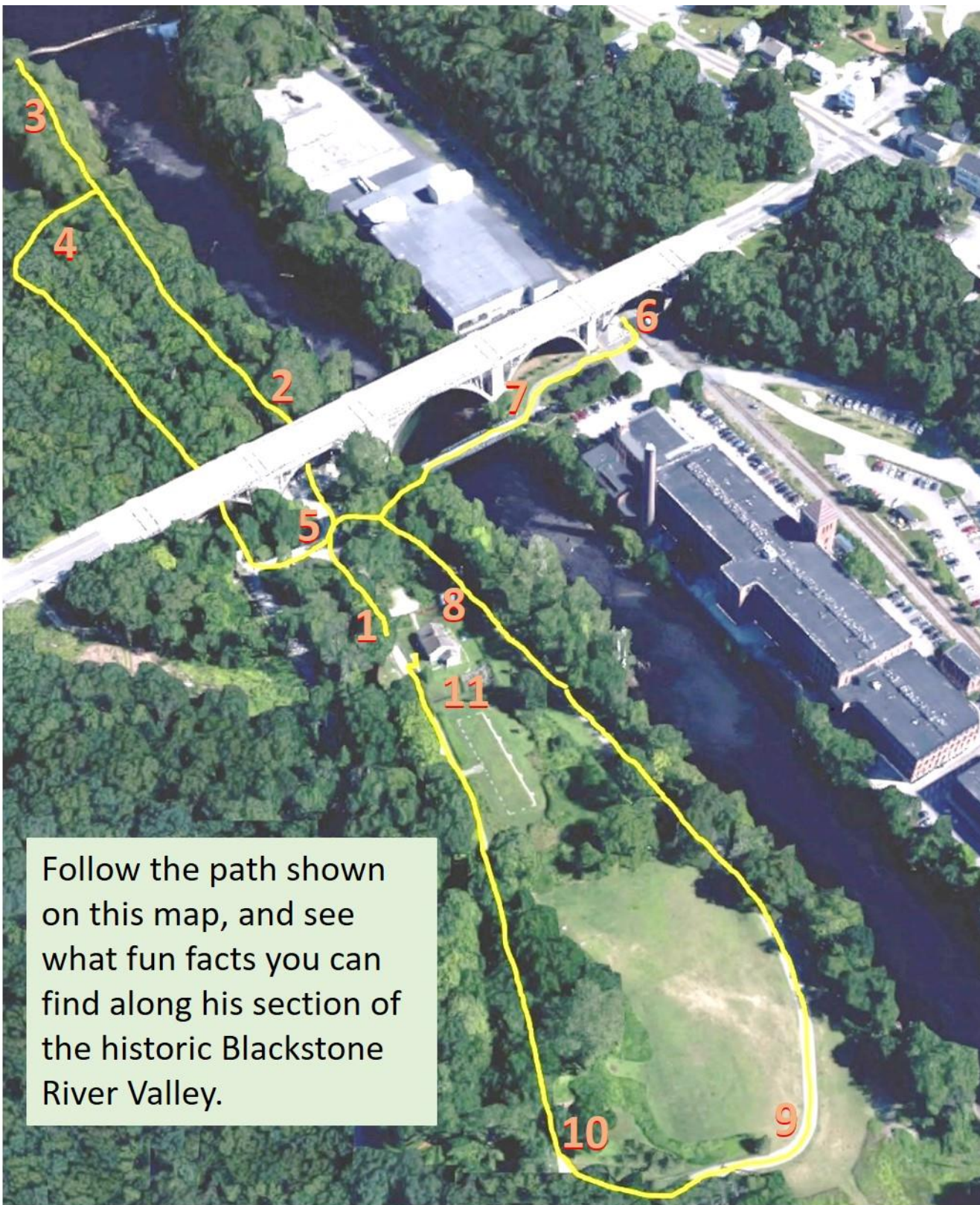
[www.nps.gov/blrv](http://www.nps.gov/blrv) &  
[www.facebook.com/BlackstoneNPS](https://www.facebook.com/BlackstoneNPS)



## Kelly and Ashton Mill Village Map & Exploration Guide

Download the official NPS app  
before your next visit





Follow the path shown on this map, and see what fun facts you can find along his section of the historic Blackstone River Valley.

### 9) Continue down the path to the Hay Fields Wayside

*What kind of animals were used for plowing the fields?*

---



### 10) Head up the path to the Kelly House Barn

The original milking barn (pictured) was built in the late 1800s to support the Ashton Mill. It was destroyed during a hurricane in the 1970s. This replica barn was completed in 2018.



*What Capital Letter can be seen on each of the barn doors?* \_\_\_\_\_

### 11) Continue down the path to the Captain Wilbur Kelly Transportation Museum?

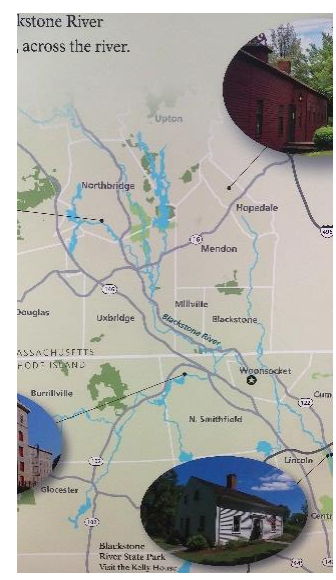
The Captain Wilbur Kelly House was turned into a museum in the early 2000s. In it you will find the history of the area told through the changes in transportation technology. The story starts with walking paths and primitive boating, but quickly works its way through horse and wagons, canals, trains and beyond.



*What product did the Ashton Mill produce between 1941 and 1983?* \_\_\_\_\_

**7) Head back toward the bridge and learn about what sites make up the Blackstone River NHP**

The Blackstone River Valley National Historical Park was established in 2014 to protect, preserve and interpret the industrial heritage of the Blackstone River Valley. Spread throughout the Blackstone Valley National Heritage Corridor, between Worcester, MA and Providence, RI, the park is made up of 6 distinct historic sites.



*Name another site in the National Park* \_\_\_\_\_

**8) Cross the bridge and find the steps that go down to the Blackstone River?**

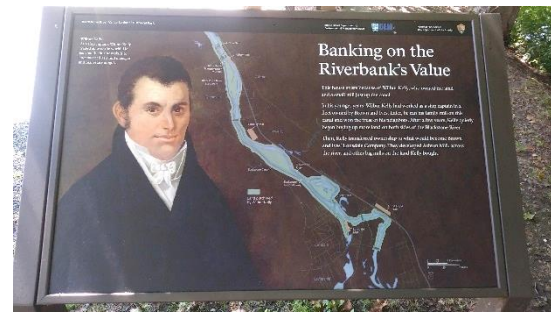
The Blackstone River flows 48 miles and drops around 450 feet on its journey from Worcester, MA to Pawtucket, RI. From there it joins the Seekonk River and continues into Narragansett Bay. Due to the waterpower it harnessed, and the mills that were built along its shores, it became known as the "Hardest working river in America".



*How many steps lead down to the river?* \_\_\_\_\_

**1) Start at the Captain Wilbur Kelly Wayside**

Captain Wilbur Kelly was the captain of the ship the *Ann & Hope*. He was involved in trade with China. After his shipping days were over, he became a mill owner and overseer. Captain Kelly actually lived in Providence. The house to your left was built in 1835 and was the home of Captain Kelly's son, Christopher.



*What company did Captain Kelly work for?* \_\_\_\_\_

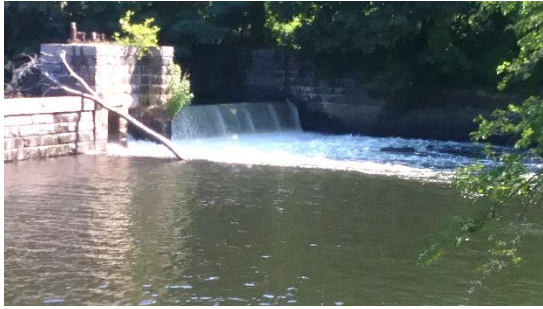
**2) Head under the bridge to the Kelly Mill Wayside**



The two mounds in front of you are all that is left of what is now known as the Kelly Mill. The original Smithfield Cotton and Woolen Company mill was finished around 1815 and an addition was added in 1845. The mill was in use until around 1867.

*There is a large tree to the right of this site. What type of tree is it?* \_\_\_\_\_

### 3) Continue down the path to the Ashton Dam and the Canal Boat Wayside



The dam you see in front of you was built in 1867. It was built to help power the Ashton Mill. The original dam used by the Kelly Mill was around 20 yards upstream. Dams created mill ponds behind them. Unfortunately, lots of pollution that was dumped in the river, got caught behind these dams, and is still present in the river today.

*How long was a typical Canal Barge?* \_\_\_\_\_

### 4) Head back and take the Canal Bridge turnoff



The Blackstone Canal made a navigable transport between Providence, RI and Worcester, MA. Two horses would tow a canal barge up and down the canal at around 4 miles an hour. It took 2 days for a barge to travel the length of the canal. The canal, however, was only in use for 20 years, as it was replaced with the more reliable railroad.



*Between what years was the Blackstone canal used for transporting goods?* \_\_\_\_\_

### 5) Continue back toward the Kelly House to what is left of the Gasometer



The Gasometer was a building used to store coal gas that was used for heating and lighting Ashton Village. The gas was stored across the river from the village for safety purposes. The gas was piped up from the Gasworks in Lonsdale, around 3 miles downstream from here.

*What was the shape of the Gasometer?* \_\_\_\_\_

### 6) Cross the river and find the Ashton Village Wayside



Ashton Village is an example of the Rhode Island System of Manufacture. It is a typical "Mill Village". It contains the mill, the worker housing, a school, a church and the company store. The farm that supported the Ashton Village was back by the Kelly House. Feel free to take a walk around the mill village.



*What was the smokestack on the side of the mill used for?*

\_\_\_\_\_